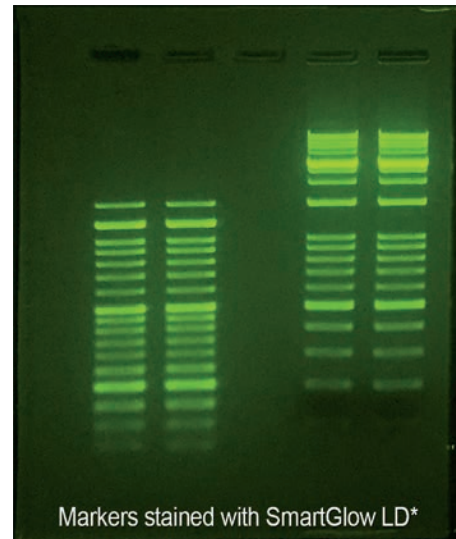


- Replaces hazardous Ethidium Bromide (EtBr)
- Better sensitivity than EtBr
- Detect as little as 0.1ng of DNA
- Two types available
- PS Pre Stain

- LD Loading Dye
- Excitation by UV light or blue light
- Compatible with Accuris SmartBlue™ Transilluminator
- Ships at ambient temperature (stored at 4°C)



PR1MA™ SmartStain™ PS (Pre-Stain) can be used as a direct replacement for Ethidium Bromide in agarose and polyacrylamide gel electrophoresis. The stain emits green fluorescence when bound to dsDNA or ssDNA and emits red fluorescence when bound to RNA. PR1MA™ SmartStain™ PS exhibits excitation peaks at 290 nm and 490 nm, allowing it to be used with UV and blue light.



ORDERING INFORMATION

ITEM #	DESCRIPTION	QUANTITY
BE4500-LD	Loading Dye, Blue & UV light	1 mL
BE4500-PS	Pre-Strain, Blue & UV light	1 mL